

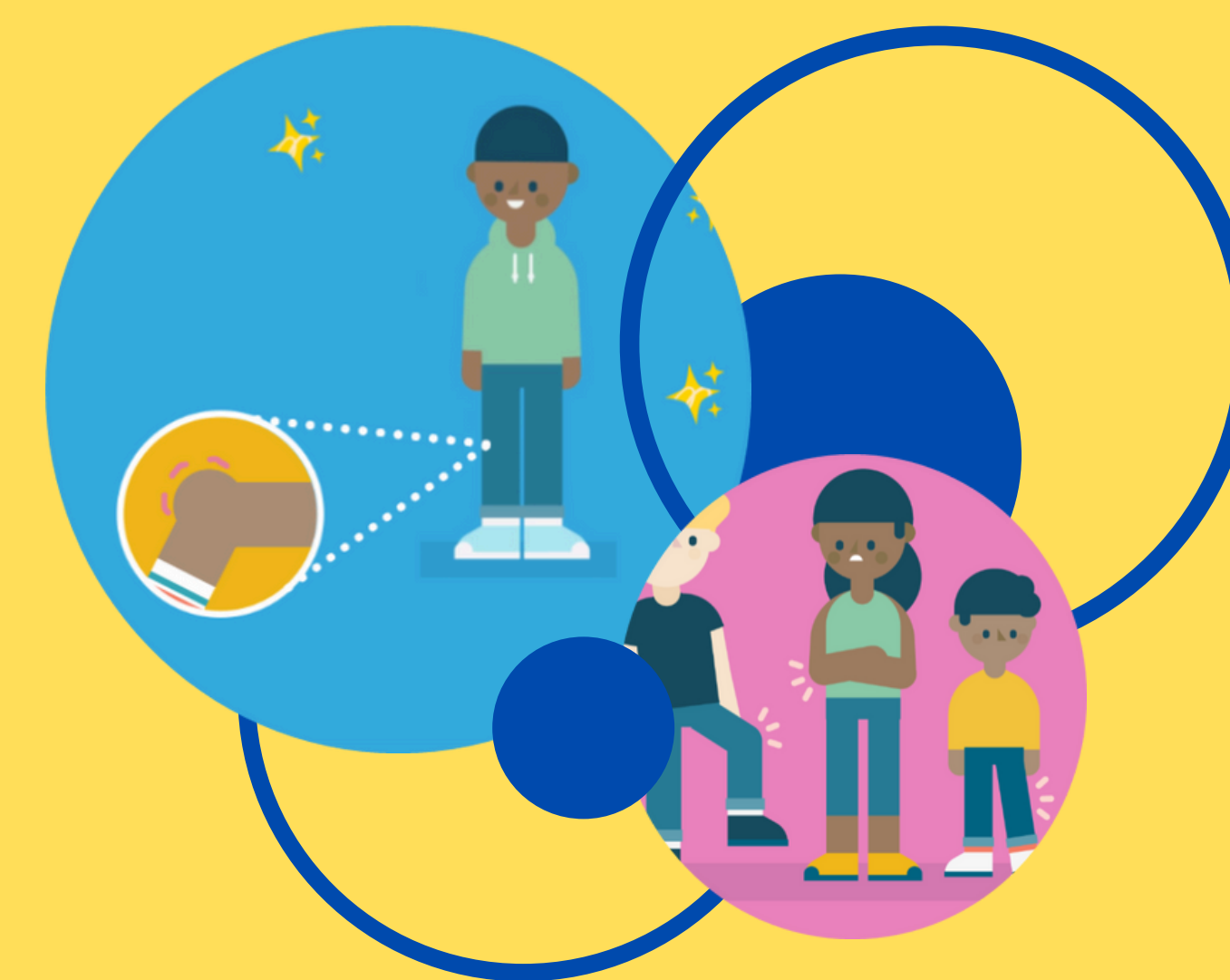


PIC Bone

Imaging in Paediatric Osteomyelitis

NEWSLETTER

May2024



NEWS BITES:

STAY IN TOUCH! WITH WHATSAPP



We have launched a **WhatsApp Community Group** for everyone involved in the **PIC Bone Study**.

This is for direct communication between sites and study team, troubleshooting queries on the go, and receiving useful updates.

There are group chats for general queries and Assoc PIs. Feel free to join only ones relevant to you.

Scan the QR Code to join!



SUBSTANTIAL AMENDMENT



The updated documents are now in use! Localised study packs have been posted to each site.

Helpful Reminders:

- Clinicians can now recruit atraumatic limbs and irritable hips.
- Records prior to Feb 2018 can be added to the retrospective database.
- Please complete e-consent sign-off in survey mode.

Share the Knowledge:

Recruitment Tips from Team Alder Hey

Alder Hey NHS Trust's Co-PI, Shrouk Messahel, was kind enough to share the team's **hottest tips and tricks for boosting recruitment**. The Alder Hey team have managed to recruit 139 participants to the prospective arm of the study!

- Regular 5 min updates by the research staff and Assoc PI / PIC Bone champion to the ED team on the shop floor at team gatherings (the safety huddle/handover times etc).
- Ready-to-go parent leaflets for the clinical team to give to the parent/carers in case research staff not available. That way the parent can be contacted by phone by the team even after discharge.
- Posters and count of number recruited with lots of pats on the back!
- Regular updates in departmental newsletter.
- Someone working on PIC Bone watching the tracker all shift and highlighting from triage by putting a comment next to their name.



A massive thank you and well done to the Alder Hey team, lead by Shrouk Messahel! (R to L below)

- Sarah Siner
- Laura Tremarco
- Karen Geoghegan
- Stephen Fletcher

Not featured but Kelly Curran & Meriel Tolhurst-Cleaver too!

Message from Tim & Dan:

“



Two thirds of the way there – the fight is on to get this study over the line. The faster that we recruit, the faster that we turn sore legs of children into terrific tales of scientific discovery!

Get your trainees, medical students, nurse practitioners and everyone onboard. The sites with the highest recruitment, also have the most people fulfilling the collaborative authorship criteria – see **www.TOTSresearch.org** (see summary below): ”

Any site member working on PIC Bone can be granted **collaborative authorship**.

CRITERIA:

- recruit and consent 20 + patients to the prospective arm of the study
- OR
- complete 100 + records into the retrospective arm of the PIC Bone Study.



picbone@ndorms.ox.ac.uk



www.picbone.com



@PicBone



01865 613460

Study Steering Committee Conclusions

The PIC Bone SSC held on 13th May 2024 was a success!

The main topics discussed included options for a study extension as well as general progress of the study. Conclusions from the SSC Chair James Robb are summarised below.



James Robb
PIC Bone SSC Chair

NEWS BITES CONTINUED

STUDY EXTENSION

With encouragement from SSC the **Study team have applied for a study extension of 6 months** - with NIHR giving the go ahead to continue at full pace with recruitment.

Watch this space for updates!

ASSOC PI SCHEME:

Time remains to **recruit and replace your Associate PIs** given the likely study extension!

Register here: [NIHR API Scheme](#)

- The opening of hospital sites has been impressive and has exceeded the target of 30 sites. It looks like 37 sites may open and that more may join the study if recruitment is extended. This indicates the study question is important to health professionals.
- The qualitative information study interviews are nearly complete, and analysis has begun. Excellent progress has been made with this arm of the study and is going according to plan.
- Recruitment to both the Prospective and Retrospective arms of the study is going well with a continuous, linear, upward trajectory. Recruitment has fallen behind targets, but the targets are achievable with more time.
- The Chair and SSC members unanimously support requesting a costed recruitment extension from NIHR (the funder of the study) to meet study recruitment targets, based on sites opened and recruitment thus far.

FAQ of the Month:

Q: For the prospective arm of the study, when should we complete the 'Results, Diagnosis And Treatment' form?

A: On the database, there are 2 columns where this form is located (after ED attendance, and 3 months). You can choose whichever you want to use. The forms are the same and only available one at a time so there is no risk of duplication.

We would suggest you fill this form after ED attendance as soon as you have all the relevant information (this might be when the patient gets seen in a follow-up clinic e.g., 1-2 weeks down the line).

However, if the diagnosis is uncertain after discharge, please wait until the 3-month timepoint as you can then review any test results arising from readmissions or clinic visits.

NEW TEAM MEMBER!

Hi, I'm Debbie, PIC Bone's new Clinical Trial Coordinator. I'm very excited to be working on this important study. Looking forward to collaborating with all the sites to continue making this study a great success!

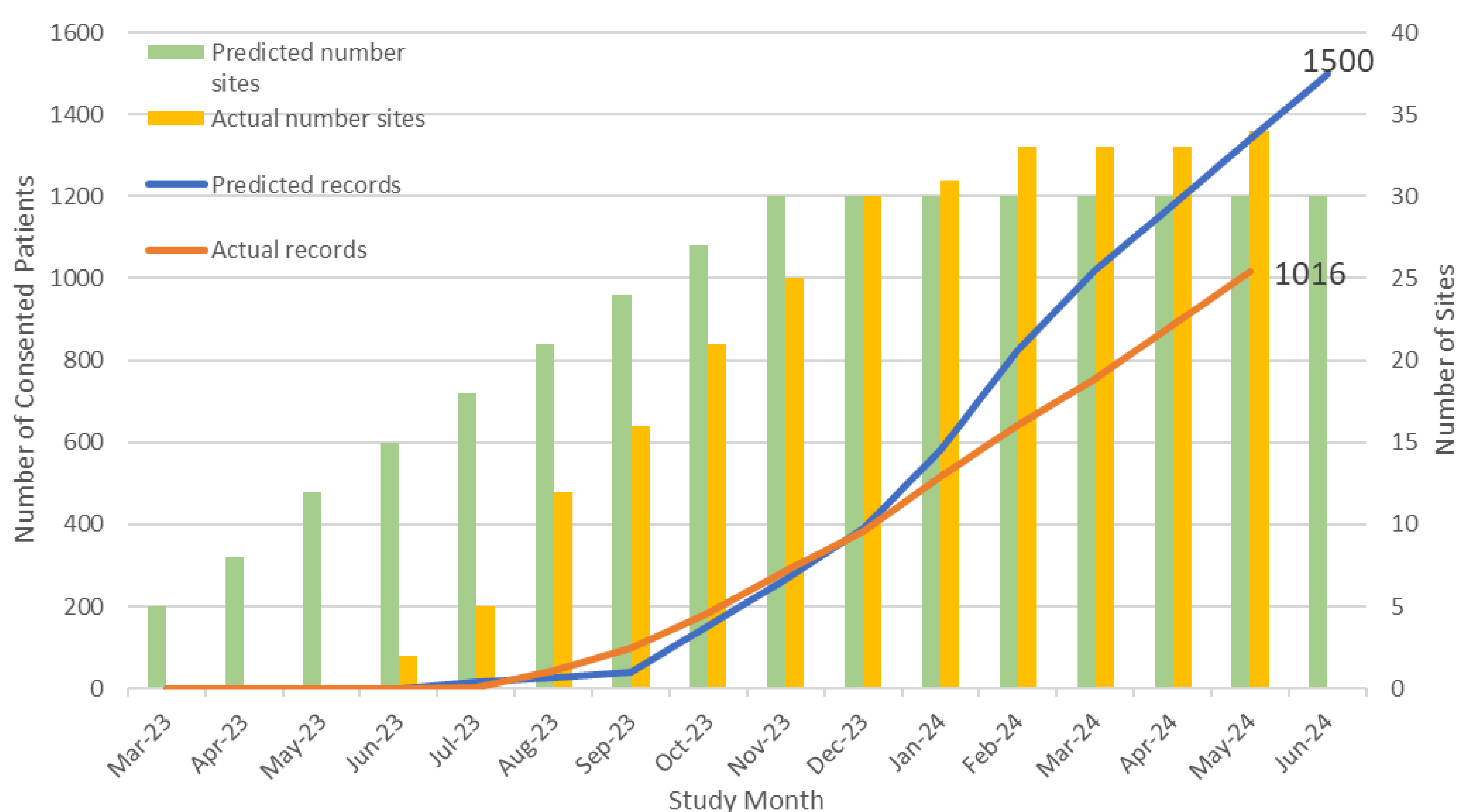


Recruitment Updates

We reached two major milestones in May. Congratulations to **Epsom and St Helier** for recruiting the 1000th participant to the prospective study and to **Southampton** for entering the 4500th record into the retrospective arm of the study. Massive thank you to all sites for all of your hard work on the PIC Bone Study!

Study Charts

Prospective Study Recruitment as of 29 May 2024



Retrospective Study Recruitment as of 29 May 2024

