



**PIC Bone**  
Imaging in Paediatric Osteomyelitis

October  
2024

## SPOOKY NEWSLETTER



### PROSPECTIVE TARGET REACHED!



#### For the Prospective Study:

We've done it! We've reached the 1,500-recruitment target and beat it!

You can no longer add new Screening Forms to the database.

Please complete outstanding Consent Forms and other forms, and resolve data queries!

#### For the Retrospective Study:

We still NEED 160 records to go to meet the Retrospective Study target!

**PLEASE KEEP GOING!**

**Thank you for your hard work!**



### NEWS BITES:

#### STUDY EXTENSION

The study extension of 10 months has been approved.

A minor amendment has been submitted to update the protocol.

Please notify your R&D departments and keep your eyes peeled for the amendment correspondence!

#### SITE PAYMENTS

Invoices have been requested for Q2 (April-June 2024) payments this month.

Please speak to your finance teams to get these invoices raised as soon as possible!



### Message from Tim and Dan:

“Three orthopaedic surgeons walked into a bar in Berlin.... sounds like the start of a joke....hmmm, but why Berlin?

Well the microbiologists kept talking about **culture!**

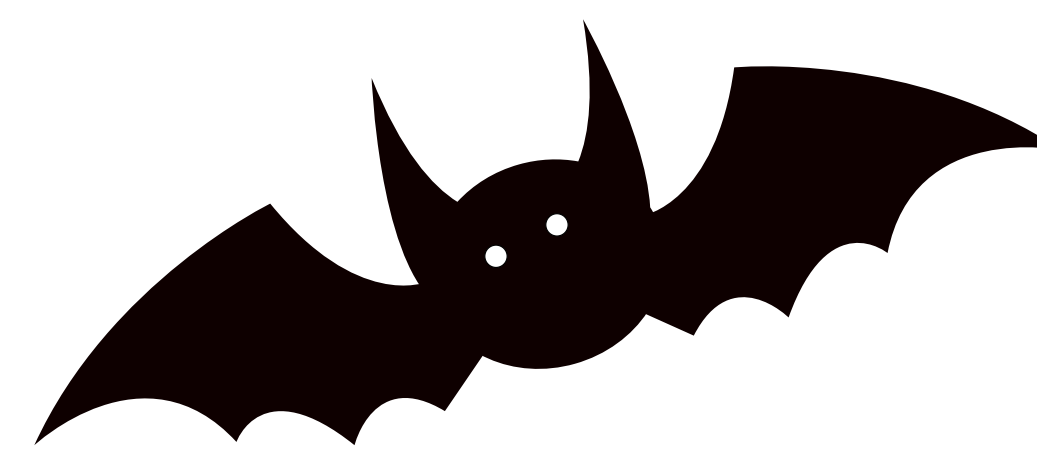
Nevertheless, the talk of the conversation was about how amazing PICBone is going...

Well done everyone for reaching the target on the prospective study!!!

Final push for the retrospective study now, we are not far. ”



Tim and Dan in Berlin with Mr James Hunter, paediatric orthopaedic lead for GIRFT - Getting It Right First Time.



### SITE QUERY REPORTS

#### Results Forms -

The 'Due CRF' reports now include Results Forms that have been started, but not yet completed on the database.

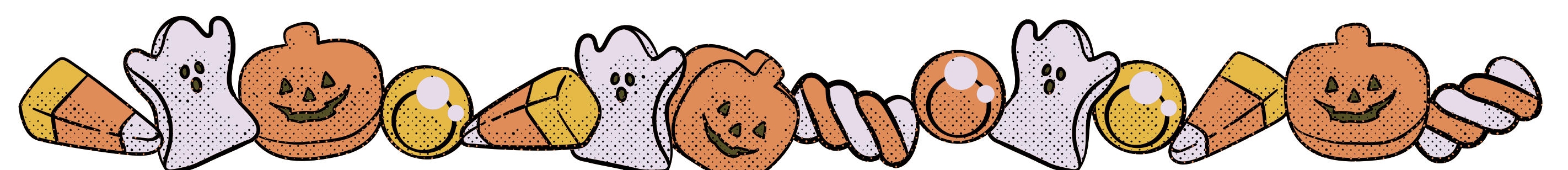
**Please complete your Results Forms!!!**

#### Hospital Readmission Forms -

A Hospital Readmission Form will show on your reports when a patient has told us they visited another hospital on their 3-month follow-up questionnaire.

Please contact the other hospital (named on the questionnaire) as part of clinical governance to see whether further tests were done or if the diagnosis changed.

**Please let us know if you need our help with this.**



picbone@ndorms.ox.ac.uk



@PicBone



www.picbone.com

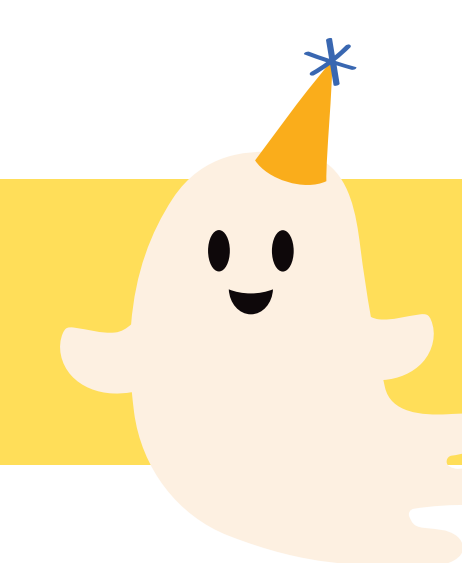


01865 613460

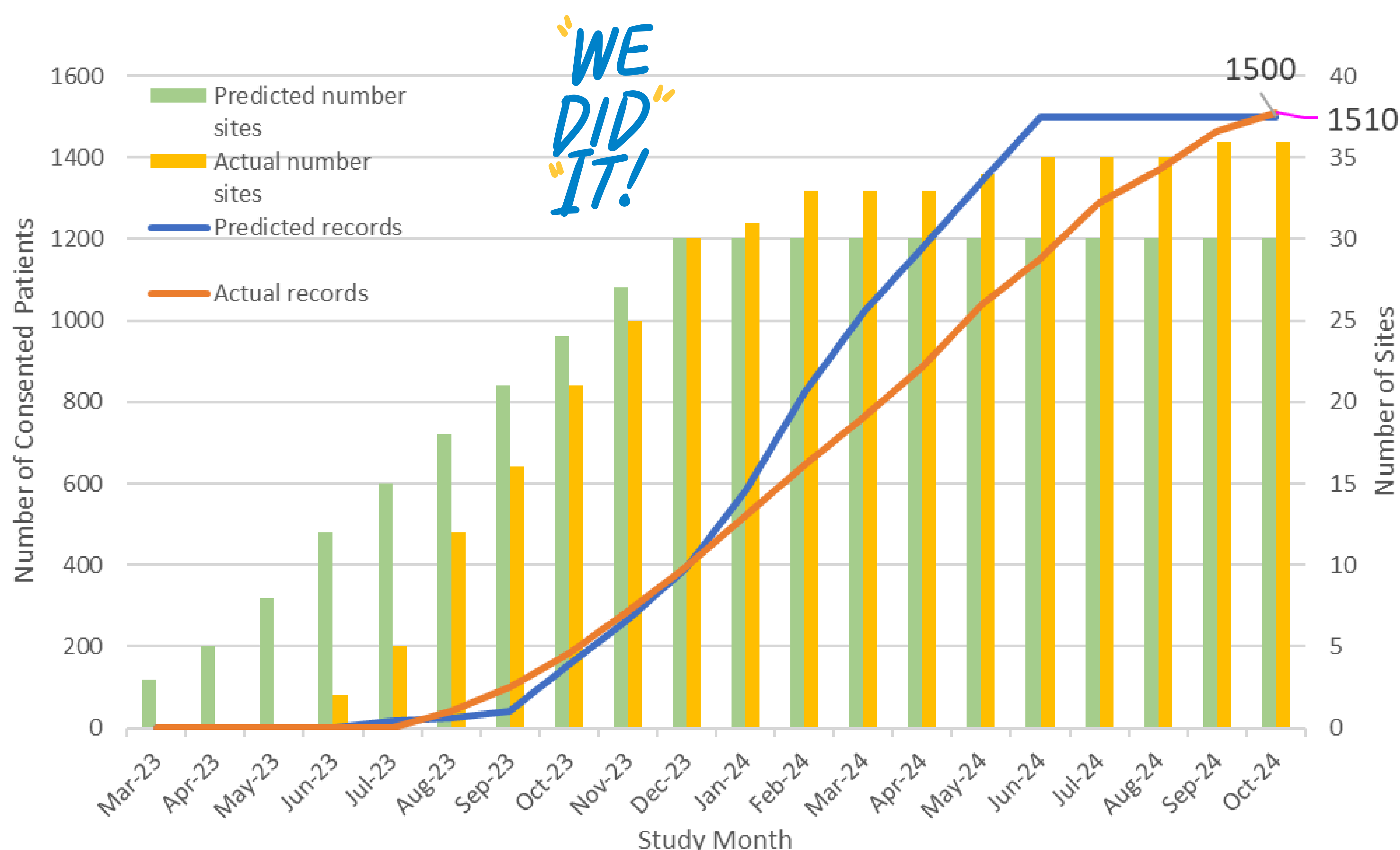




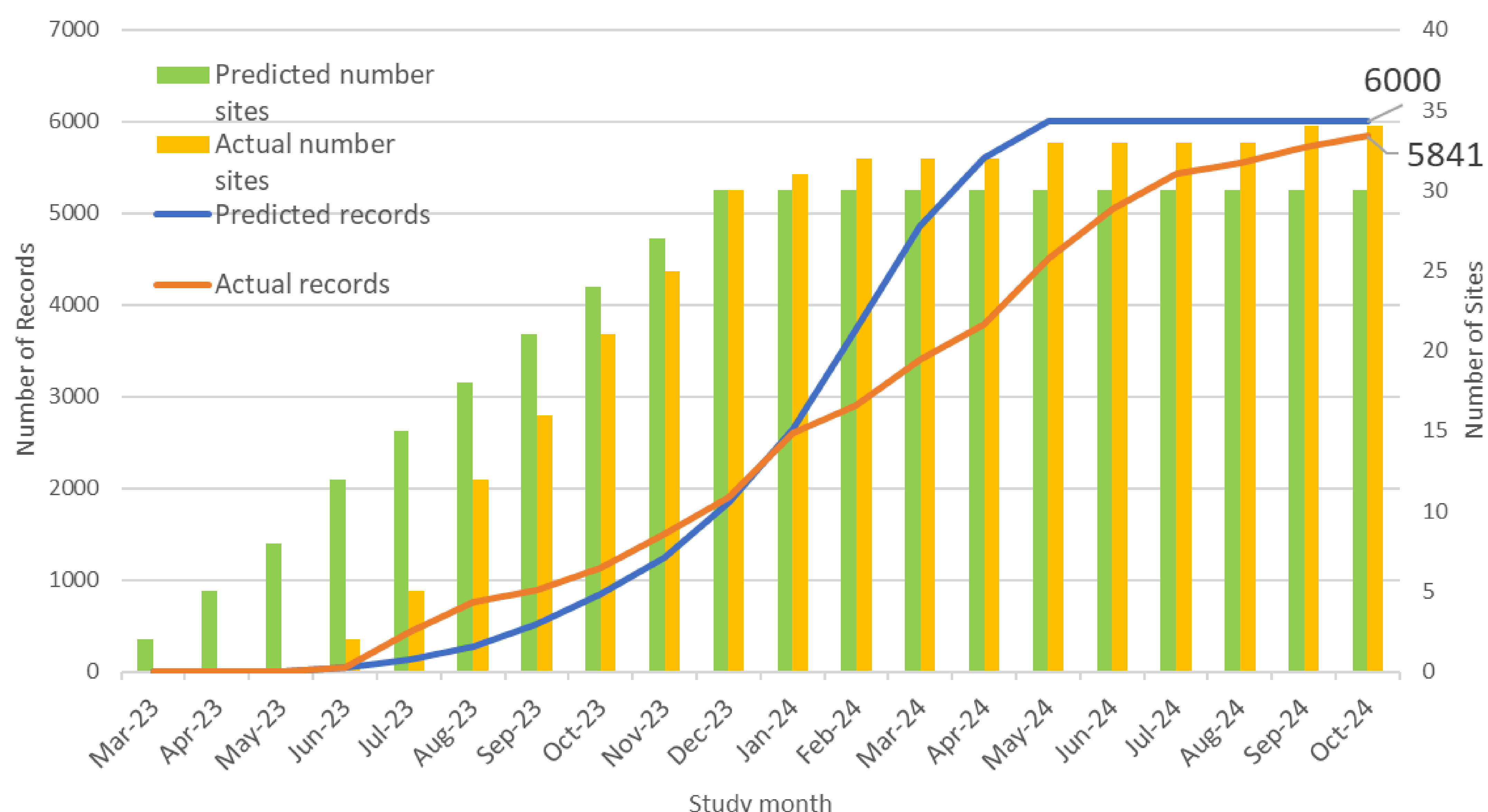
## Recruitment Updates - Study Charts:



### Prospective Study Recruitment as of 23 October 2024



### Retrospective Study Recruitment as of 23 October 2024



# HAPPY HALLOWEEN

